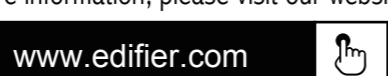


Manual Edition 1.0, May 2022
 IB-200-A3080S-00

For more information, please visit our website:



Model: EDF180003

Edifier International Limited
 P.O. Box 6264
 General Post Office
 Hong Kong

Designed by Shenzhen Edifier Professional Audio Inc

Tel: +852 2522 6989
 Fax: +852 2522 1989
 www.edifier.com

© 2022 Edifier International Limited. All rights reserved.
 Printed in China

NOTICE:

For the need of technical improvement and system upgrade, information contained herein may be subject to change from time to time without prior notice. Products of EDIFIER will be customized for different applications. Pictures and illustrations shown on this manual may be slightly different from actual product. If any difference is found, the actual product prevails.

EDIFIER®

A3-8s

Trolley Speaker

— Manual —

Important Safety Instruction

- Please read the instructions carefully. Keep it in safe place for future reference.
- Use only accessories approved by the manufacturer.
- Install the instrument properly by following the instructions in the device connection section.
- Using the product in a 0-35°C environment is recommended. Shipping and storing the product in a 0-35°C environment is recommended.
- To reduce the risk of fire and electric shock, do not expose the product to rain or moisture.
- Do not use this product near water. Do not immerge the product into any liquid or have it exposed to dripping or splashing.
- Do not install or use this product near any heat source (e.g. radiator, heater, stove, or other devices that generate heat).
- Do not place any object filled with liquids, such as vases on the product; neither should any open fire, such as lighted candles be placed on the product.
- Do not block any ventilation openings. Do not insert any object into ventilation openings or slots. It may cause fire or electric shock.
- Keep sufficient clearance around the product to maintain good ventilation (minimum 5cm is recommended).
- Do not force a plug into the jack. Before connection, check for blockage in the jack and whether the plug matches the jack and is oriented to the right direction.
- Keep the provided accessories and parts (such as screws) away from children to prevent from being swallowed by mistake.
- Do not open or remove the housing yourself. It may expose you to dangerous voltage or other hazardous risks. Regardless the cause of damage (such as damaged wire or plug, exposure to liquid splash or foreign object falling in, exposure to rain or moisture, product not working or being dropped, etc.), the repair has to be performed by an authorized service professional immediately.
- Before cleaning the product with dry cloth, always turn off the product and disconnect the power plug first.
- Never use strong acid, alkali, gasoline, alcohol, or other chemical solvents to clean the product surface. Use only neutral solvent or clear water for cleaning.
- The product must be used at an altitude of lower than 2000m.

Excessively loud music may lead to hearing loss. Please keep the volume in a safe range.

Correct Disposal of this product. This marking indicates that this product should not be disposed with other household wastes throughout the EU. To prevent possible harm to the environment or human health from uncontrolled waste disposal, recycle it responsibly to promote the sustainable reuse of material resources. To return your used device, please use the return and collection systems or contact the retailer where the product was purchased. They can take this product for environmental safe recycling.

Important Safety Instruction

Power warning:

1. Place the product near the power outlet for easy use.
2. Before use, make sure that the operating voltage is the same as your local power supply. Correct operating voltage can be found on the product plate.
3. For safety purpose, unplug the product during lightning storms or when unused for extended periods of time.
4. Under normal conditions, the power supply may get hot. Please keep good ventilation in the area and exercise caution.
5. Product nameplate and safety warning labels on the housing or bottom of the product or power adaptor.

This symbol is to alert the user to the presence of un-insulated dangerous voltage within the product's enclosure that may be of sufficient magnitude to constitute a risk of electric shock to persons.

This symbol is to warn the user not to disassemble the enclosure of the product and there is no user-replaceable part inside. Take the product to an authorized service center for repair.

This symbol indicates that the product is a CLASS II or double insulated electrical device with no earth requirement.

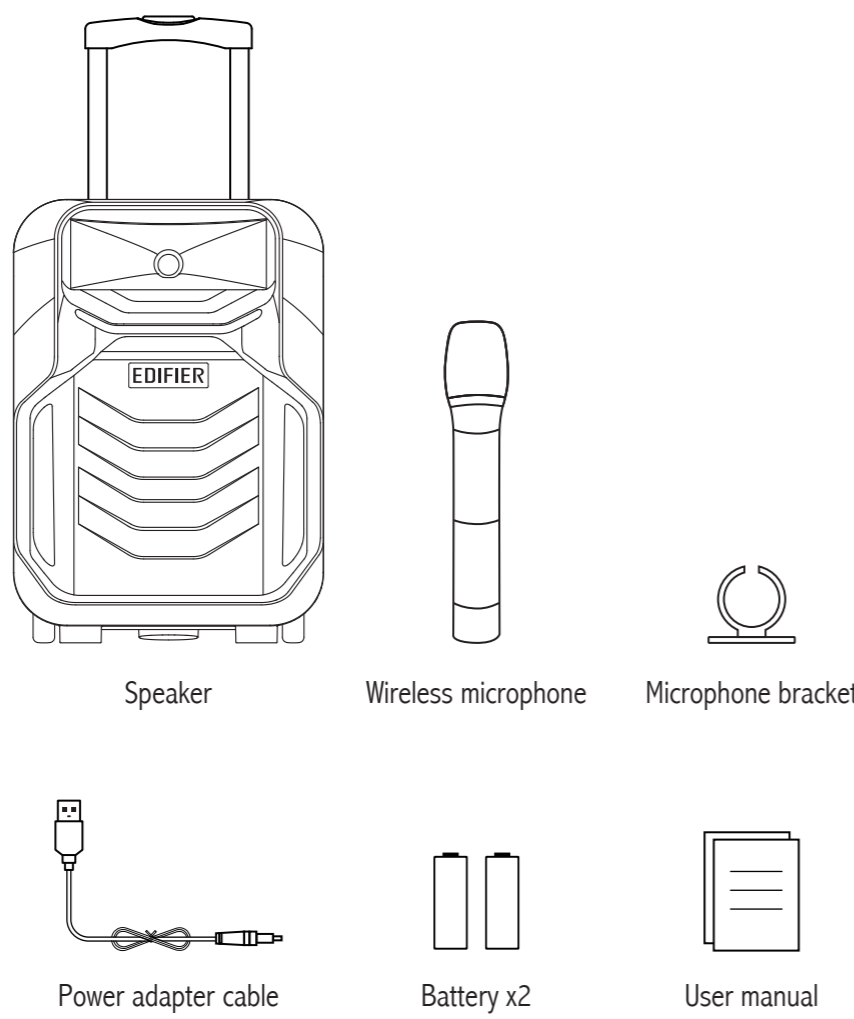
Battery powered products:

- Danger of explosion if the battery is incorrectly replaced. Replace only with the same or equivalent type.
- Never disassemble, hit with force, squeeze batteries or dispose of batteries in fire. Do not expose batteries in conductive materials, liquid, fire or heat.
- Do not let metal object contact two battery poles. If the battery looks swollen, leaking, discolored, having odor or any abnormal appearance, stop using it. Do not use the battery after immersed in water.
- Improper use of battery may lead to explosion or leakage, causing skin burn or other injuries; in the event of battery leakage, handle it with care and immediately dispose of the battery in the manner in compliance with applicable laws and regulations in your locality.
- The battery subjected to extremely low air pressure may result in an explosion or the leakage of flammable liquid or gas.

For wireless product:

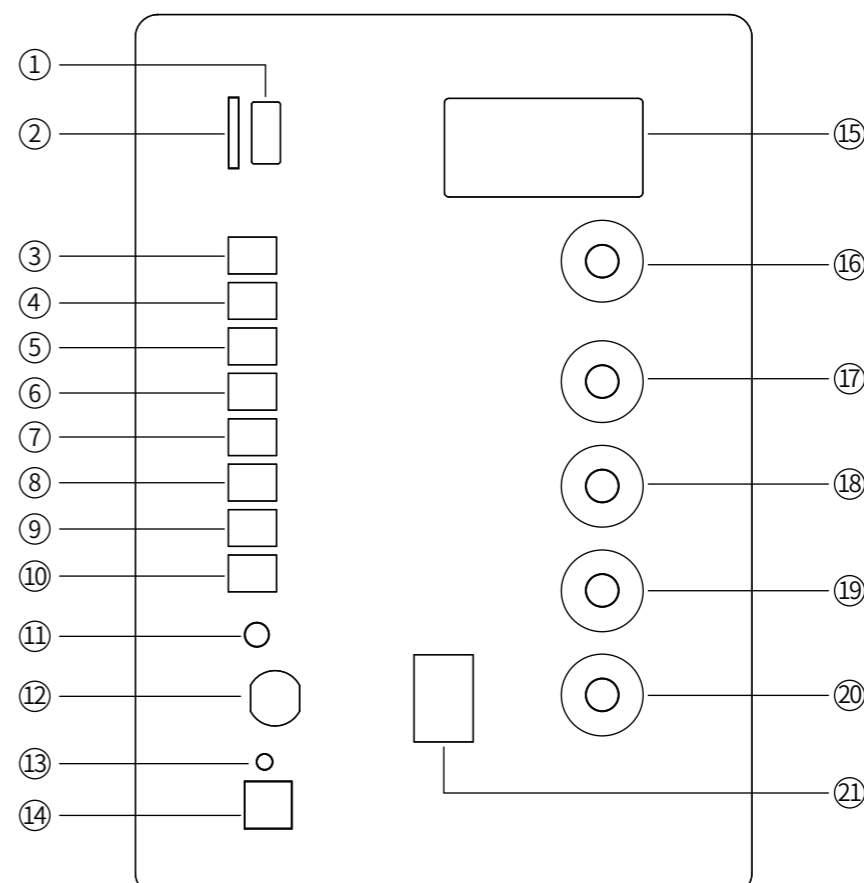
1. Wireless product may generate shortwave radio frequencies and interfere with the normal use of other electronic devices or medical equipment.
2. Turn off the product when it's disallowed. Do not use the product in medical facilities, on airplane, at gas stations, near automatic gates, automatic fire alarm system or other automated devices.
3. Do not use the product in the vicinity of a pacemaker within a 20cm range. The radio waves may affect the normal operation of the pacemaker or other medical devices.

What's in the Box



Note:
 • Images are for illustrative purposes only and may differ from the actual product.
 • For the need of technical improvement and system upgrade, information and specifications contained herein may be slightly different from actual product. If any difference is found, the actual product prevails.

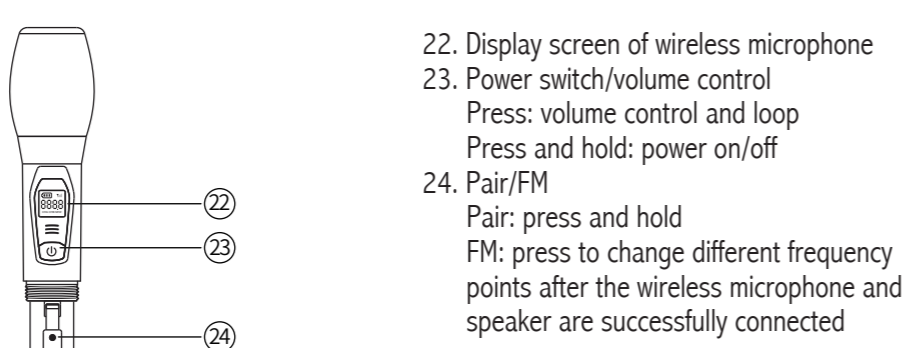
Functional Operation



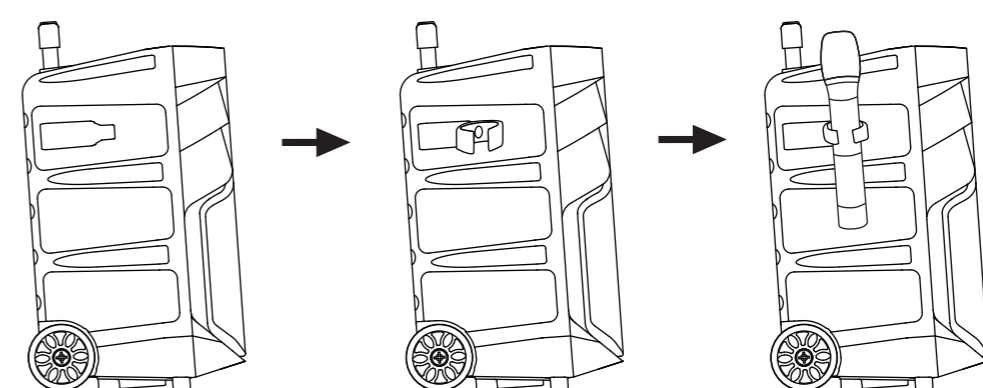
- 15 Display screen
-
- **BLUE** Bluetooth mode
 - **LINE** Line In mode
 - Light on: single loop Off: full loop
 - Light on: microphone priority is enabled
 - Light on: karaoke mode is enabled
 - Light on: start recording
 - Battery level display

Functional Operation

1. USB flash disk input
2. microSD (TF) card input
3. Record/play
Press: start recording (works at Line In/ USB flash disk/microSD (TF) card mode); Press any button again to stop recording; Press and hold: play recording; press any button again to to exit playing
4. TWS pairing
Press and hold: enter or exit the TWS pairing mode
5. Karaoke mode
6. Microphone priority
7. Previous track (works at Bluetooth/USB flash disk/ microSD (TF) card mode)
8. Play/pause
Press: play/pause (works at Bluetooth/ USB flash disk/microSD (TF) card mode); Mute/mute off (works at Line In mode); Press and hold: single loop/full loop (works at USB flash disk/ microSD (TF) card mode)
9. Next track (works at Bluetooth/USB flash disk/ microSD (TF) card mode)
10. Input mode
Press: input mode (Bluetooth/ microSD (TF) card/USB flash disk/ Line In mode); Press and hold: disconnect Bluetooth and clear pairing records (Bluetooth connected)
11. Line In input
12. Wired microphone input
13. Charging indicator
Fully charged: indicator steady lit
Fully charged: indicator off
14. Power port
15. Display screen
16. Music volume control
17. Treble control
18. Bass control
19. Microphone reverb control
20. Microphone volume control
21. Power switch



Microphone Bracket Installation



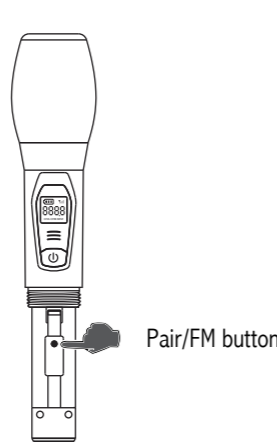
Firstly insert the microphone bracket into the groove on the left/right side of the speaker, and then place the microphone into the bracket.

Specifications

Power output: Treble: 5W
 Bass: 6W
 Input: 5V = 2A

Operating Instructions

Microphone connection



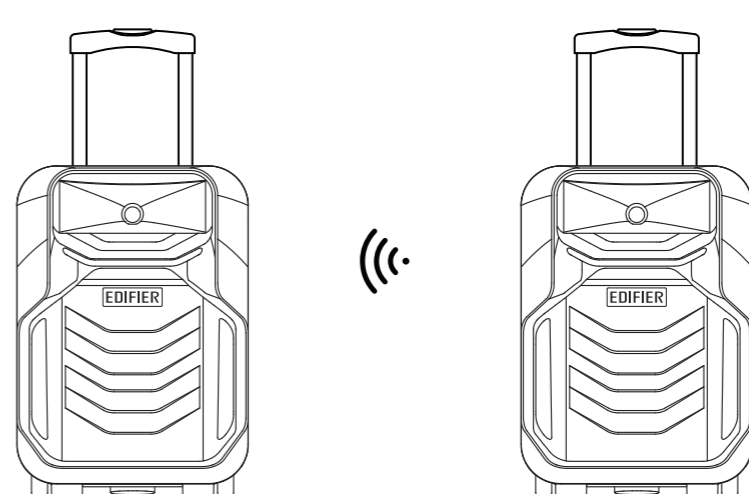
The included wireless microphone has been paired with the speaker before leaving the factory. Please follow the steps below to complete the re-pairing:
 • Power on the wireless microphone and unscrew the lower tube of the microphone.
 • Press and hold the "Pair/FM" button, and release it waiting until the display screen of the wireless microphone blinks rapidly.
 • Power on the speaker, and wait until the display screen of the wireless microphone is no longer blinking, then the pairing is done and a wireless connection is made.

Charge

1. When hearing a low battery prompt tone, please charge the speaker.
2. Charging: indicator steady lit Fully charged: indicator off
3. To extend the battery life, it's better to charge for more than 2 to 3 hours even after the red LED goes off.
4. If the speaker is not used for a long time, it's better to charge it once every three months and each of which should be 5 to 10 hours.

Operating Instructions

TWS pairing of two speakers



Press and hold for 3s "PA" blinks rapidly The passive speaker constantly shows "LEFT" "RIGHT" for 3s, then resume the original displaying

- ① Turn the speakers on, respectively press and hold the "Wireless Pairing" buttons on the control panels of the two speakers for around 3s, the speakers will enter the TWS pairing mode and "PA" will blink rapidly on the display screens;
- ② After the two speakers are paired successfully, one becomes the active speaker and the other one is the passive speaker. The display screen of the passive speaker will constantly show "LEFT" while the display screen of the active speaker will show "RIGHT" for 3s, then resume the original displaying;
- ③ The speakers are ready for use. Functional operations of the control panel on the active speaker will sync with the passive speaker.

Operating Instructions

Bluetooth connection



- It is Bluetooth input by default when power on for the first time; or switch to Bluetooth input by pressing the "Input Mode" button on the speaker control panel when in other input modes.
- The speaker will auto-enter the Bluetooth pairing state, "BLUE" will blink rapidly on the display screen.
- Select "EDIFIER A3-8s" in your device setting to connect, "BLUE" will be constantly lit on the display screen after connected.
- If the speaker is turned off in Bluetooth input, the speaker will auto-connect to device used last time when turned on again.

Bluetooth connecting	BLUE Blink rapidly
Bluetooth connected	BLUE Constantly lit

Note:

1. PIN code for connection is "0000" if needed.
2. To enjoy all Bluetooth functions of this product, please ensure your device supports A2DP, AVRCP and HFP profiles.

Troubleshooting

Cannot find "EDIFIER A3-8s" in Bluetooth mode

- Ensure the speaker is ON.
- Ensure the speaker is switched to Bluetooth mode.
- Disconnect from any Bluetooth device by pressing and holding the "Input Mode" button on the speaker, and search "EDIFIER A3-8s" again.
- Turn the speaker off and restart it to switch to Bluetooth mode, searching "EDIFIER A3-8s" again.
- Effective Bluetooth transmission range is 10 meters; Please ensure that operation is within the range.
- Try another Bluetooth device for connection.

No sound from the speaker

- Ensure the speaker is ON.
- Ensure the audio cables are firmly connected and the input is set correctly on the speaker.
- Ensure signal output from the audio source is normal.
- Try to turn up the volume of the speaker or audio source.
- Turn the speaker off and restart it.

No sound from wireless microphone

- Check if batteries are installed or if the positive and negative poles are reversed.
- Ensure the microphone switch is ON.
- Try to turn up the microphone volume.
- Ensure the microphone is within the effective operating range.

Cannot read files in USB flash disk/microSD (TF) card

- Ensure USB flash disk/microSD (TF) card is correctly inserted into the slot.
- Ensure audio file in the USB flash disk/microSD (TF) card is MP3/WMA/WAV format, the highest sampling rate supported is 48KHz, and the maximum capacity supported is 64G.
- Insert USB flash disk into computer and right-click for "Properties" to check if its file system is FAT32, FAT16, etc. format. As NTFS files are not supported by this speaker, the users can format the USB flash disk to FAT format or use another USB flash disk.

Cannot record or recording sound is small

- Ensure USB flash disk/microSD (TF) card is inserted and has enough capacity.
- Try to turn up the music volume or microphone volume.

Feedback/noise from the microphone is a little loud

- Check if the microphone is pointed close at the speaker (it should be over 1 meter away from the speaker).
- Appropriately turn down the microphone volume and treble & bass settings of the speaker.